

Epsilon Aurigae 1848-1930 Eclipse Data

Data Reseached and Provided by Brian Skiff
June 2008

Source: 1912AN.....192..389L

LUDENDORFF H.

Astron. Nach., 192, 389-406 (1912)

Bearbeitung der Schmidtschen beobachtungen des
veranderlichen epsilon Aurigae.

--- Julius Schmidt observations reduced to the
system of 1903AN.....164...81L

JD	mv	JD	mv
2395304.	3.23	2405376.	3.25
2395333.	3.20	2405393.	3.28
2395353.	3.27	2405414.	3.28
2395362.	3.15	2405421.	3.26
2395405.	3.20	2405440.	3.26
2395558.	3.16	2405456.	3.26
2395588.	3.25	2405472.	3.26
2395779.	3.67	2405487.	3.26
2395971.	3.98	2405502.	3.26
2396004.	4.01	2405517.	3.28
2396017.	4.20	2405535.	3.28
2396033.	4.08	2405549.	3.28
2396052.	3.98	2405564.	3.30
2396065.	3.93	2405576.	3.30
2396085.	4.10	2405592.	3.31
2396095.	4.05	2405607.	3.31
2396110.	4.13	2405622.	3.33
2396126.	4.17	2405637.	3.39
2396142.	4.07	2405653.	3.51
2396154.	4.00	2405663.	3.44
2396236.	3.93	2405716.	3.75
2396247.	3.81	2405746.	3.75
2396267.	4.01	2405777.	3.98
2396277.	3.83	2405790.	4.00
2396295.	3.61	2405805.	4.00
2396306.	3.44	2405818.	4.07
2396324.	3.28	2405839.	3.98
2396344.	3.40	2405854.	4.03
2396359.	3.22	2405864.	4.03
2396370.	3.28	2405899.	4.07
2396386.	3.08	2405917.	4.11
2396399.	3.23	2405930.	4.03
2396415.	3.35	2405945.	3.93
2396426.	3.22	2405956.	3.96
2396449.	3.13	2405969.	4.05
2396457.	3.20	2405990.	4.03
2396486.	3.22	2406003.	4.14
2396505.	3.22	2406015.	4.00
2396518.	3.20	2406092.	3.94
2405350.	3.26	2406108.	4.03
2405367.	3.26	2406128.	3.98

JD	mv		
2406140.	4.00	2406156.	3.89
2406168.	3.91	2406354.	3.24
2406184.	3.87	2406368.	3.24
2406201.	3.76	2406383.	3.24
2406215.	3.64	2406394.	3.26
2406231.	3.51	2406459.	3.28
2406245.	3.40	2406477.	3.28
2406260.	3.33	2406490.	3.26
2406279.	3.33	2406507.	3.28
2406293.	3.30	2406521.	3.26
2406307.	3.26	2406536.	3.28
2406322.	3.21	2406551.	3.26
2406337.	3.22	2406567.	3.26

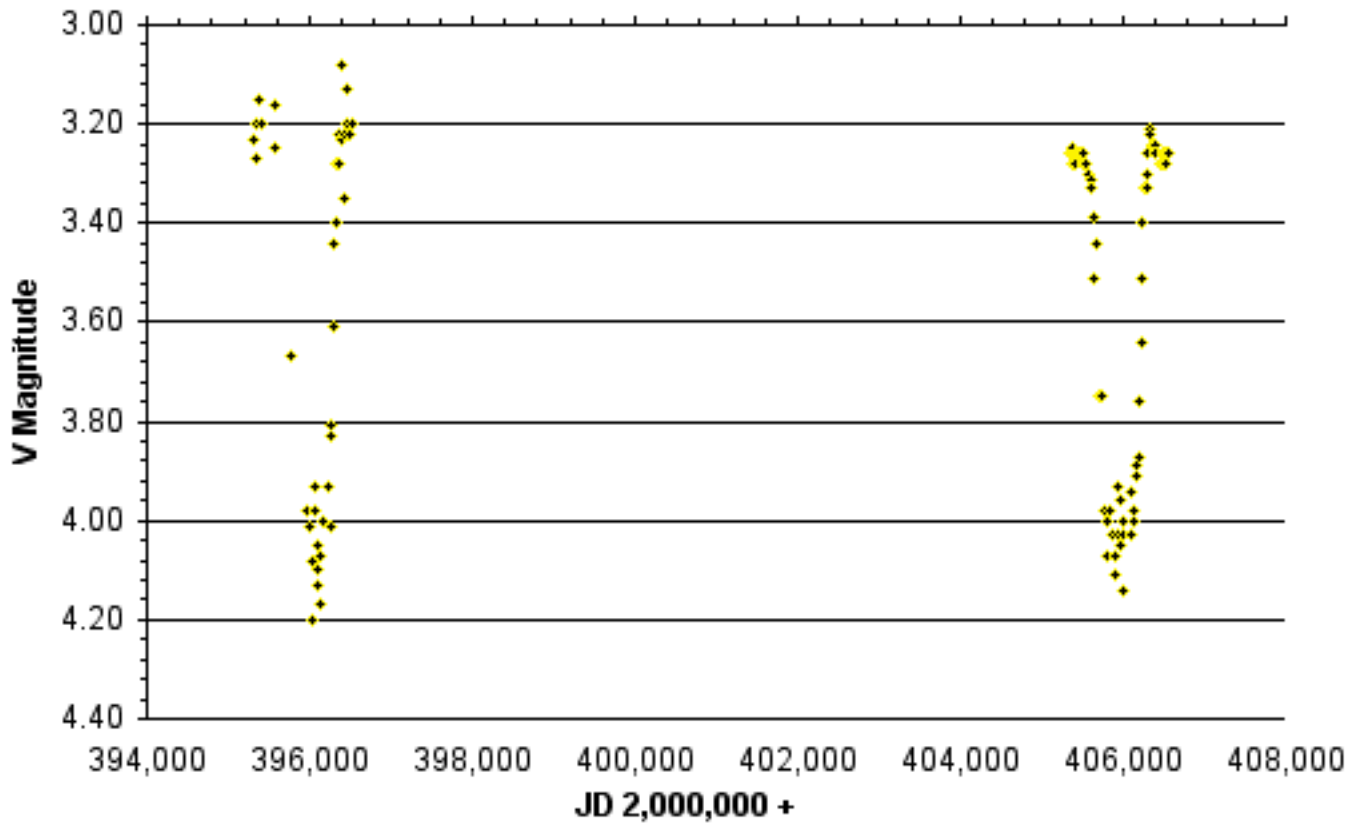
Adjusted Data (HPO)

JD			JD		
2,000,000 +	V Mag	Obsr	2,000,000 +	V Mag	Obsr
395304	3.23	Schm	396505	3.22	Schm
395333	3.20	Schm	396518	3.20	Schm
395353	3.27	Schm	405350	3.26	Schm
395362	3.15	Schm	405367	3.26	Schm
395405	3.20	Schm	405376	3.25	Schm
395558	3.16	Schm	405393	3.28	Schm
395588	3.25	Schm	405414	3.28	Schm
395779	3.67	Schm	405421	3.26	Schm
395971	3.98	Schm	405440	3.26	Schm
396004	4.01	Schm	405456	3.26	Schm
396017	4.20	Schm	405472	3.26	Schm
396033	4.08	Schm	405487	3.26	Schm
396052	3.98	Schm	405502	3.26	Schm
396065	3.93	Schm	405517	3.28	Schm
396085	4.10	Schm	405535	3.28	Schm
396095	4.05	Schm	405549	3.28	Schm
396110	4.13	Schm	405564	3.30	Schm
396126	4.17	Schm	405576	3.30	Schm
396142	4.07	Schm	405592	3.31	Schm
396154	4.00	Schm	405607	3.31	Schm
396236	3.93	Schm	405622	3.33	Schm
396247	3.81	Schm	405637	3.39	Schm
396267	4.01	Schm	405653	3.51	Schm
396277	3.83	Schm	405663	3.44	Schm
396295	3.61	Schm	405716	3.75	Schm
396306	3.44	Schm	405746	3.75	Schm
396324	3.28	Schm	405777	3.98	Schm
396344	3.40	Schm	405790	4.00	Schm
396359	3.22	Schm	405805	4.00	Schm
396370	3.28	Schm	405818	4.07	Schm
396386	3.08	Schm	405839	3.98	Schm
396399	3.23	Schm	405854	4.03	Schm
396415	3.35	Schm	405864	4.03	Schm
396426	3.22	Schm	405899	4.07	Schm
396449	3.13	Schm	405917	4.11	Schm
396457	3.20	Schm	405930	4.03	Schm
396486	3.22	Schm	405945	3.93	Schm

JD 2,000,000 +	V Mag	Obsr	JD 2,000,000 +	V Mag	Obsr
405956	3.96	Schm	406279	3.33	Schm
405969	4.05	Schm	406293	3.30	Schm
405990	4.03	Schm	406307	3.26	Schm
406003	4.14	Schm	406322	3.21	Schm
406015	4.00	Schm	406337	3.22	Schm
406092	3.94	Schm	406354	3.24	Schm
406108	4.03	Schm	406368	3.24	Schm
406128	3.98	Schm	406383	3.24	Schm
406140	4.00	Schm	406394	3.26	Schm
406156	3.89	Schm	406459	3.28	Schm
406168	3.91	Schm	406477	3.28	Schm
406184	3.87	Schm	406490	3.26	Schm
406201	3.76	Schm	406507	3.28	Schm
406215	3.64	Schm	406521	3.26	Schm
406231	3.51	Schm	406536	3.28	Schm
406245	3.40	Schm	406551	3.26	Schm
406260	3.33	Schm	406567	3.26	Schm

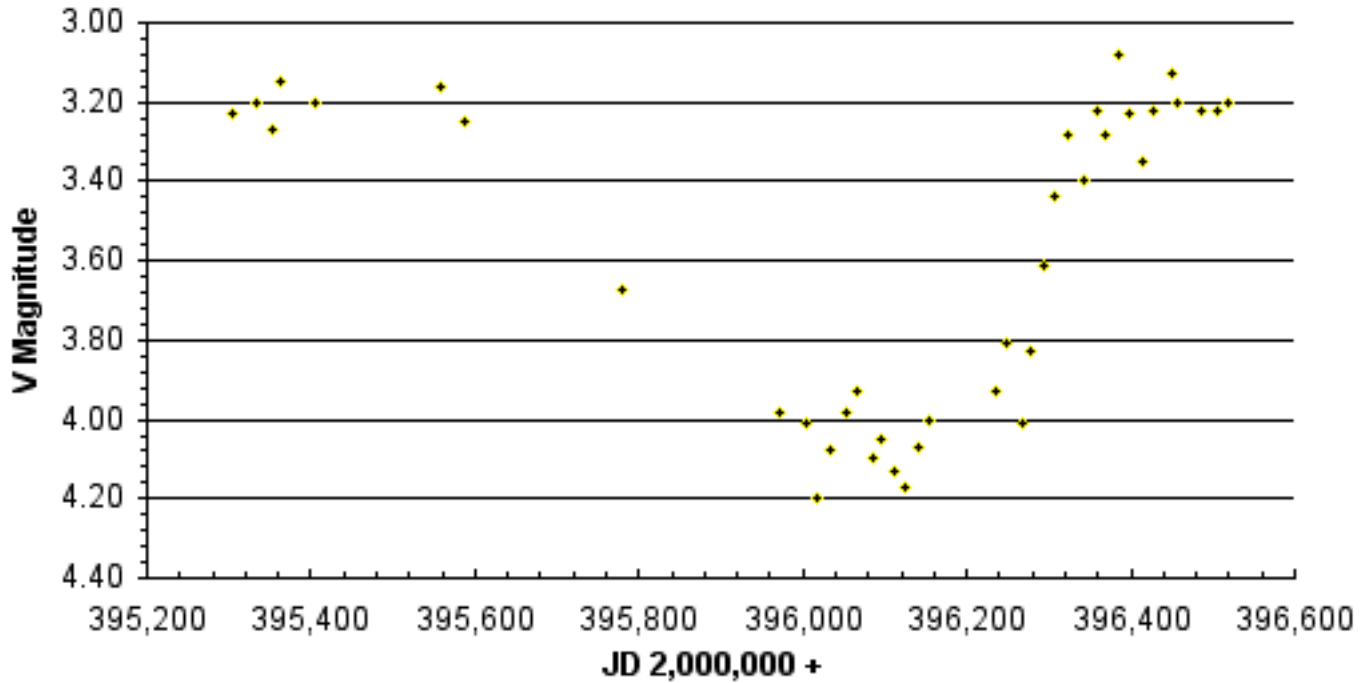
1846-1848 & 1874-1876 Schmidt Eclipses Plot (HPO)

Epsilon Aurigae 1846-48 & 1876-78 Eclipse



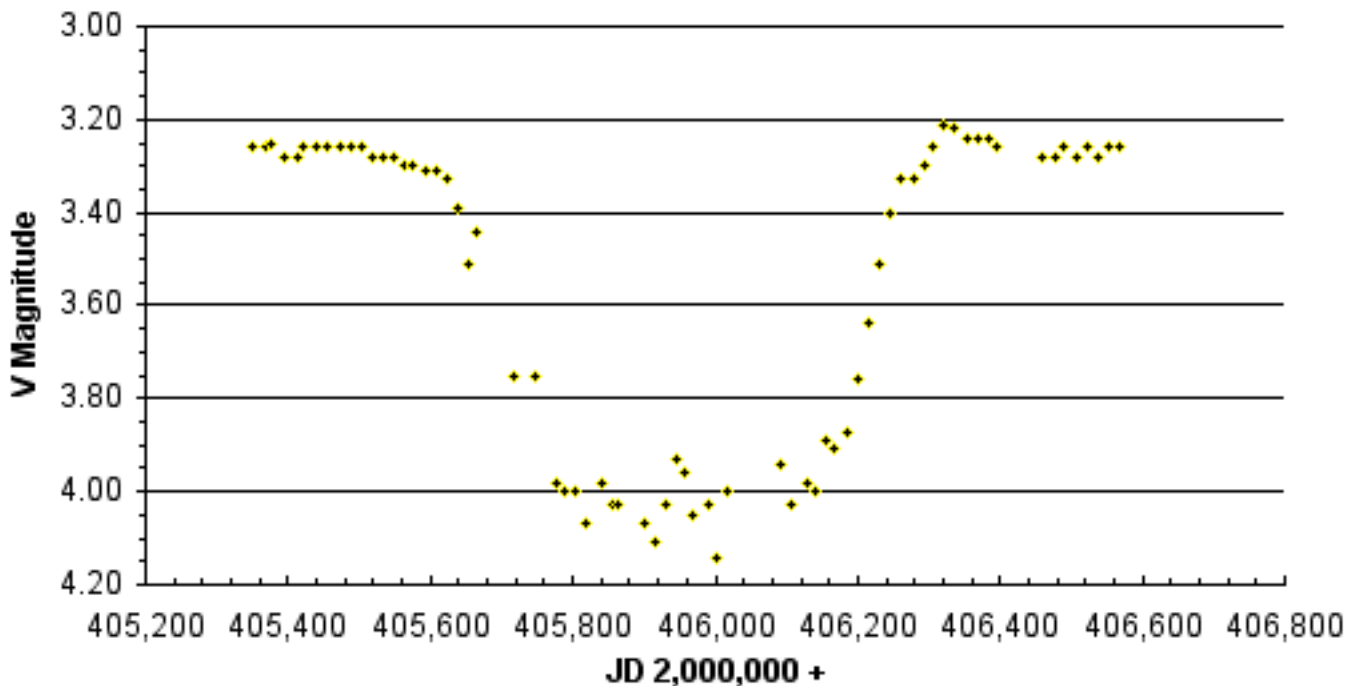
1846 -1848 Schmidt Eclipse Plot (HPO)

Epsilon Aurigae 1846-48 Data



1876 -1878 Schmidt Eclipse Plot (HPO)

Epsilon Aurigae 1876-78 Eclipse



Source: 1903AN.....164...81L

LUDENDORFF H.

Astron. Nach., 164, 81-114 (1903)

Untersuchungen über den lichtwechsel von epsilon Aurigae.

Observers: Arg = Argelander

Hei = Heis

Lui = Luizet

Pla = Plassmann

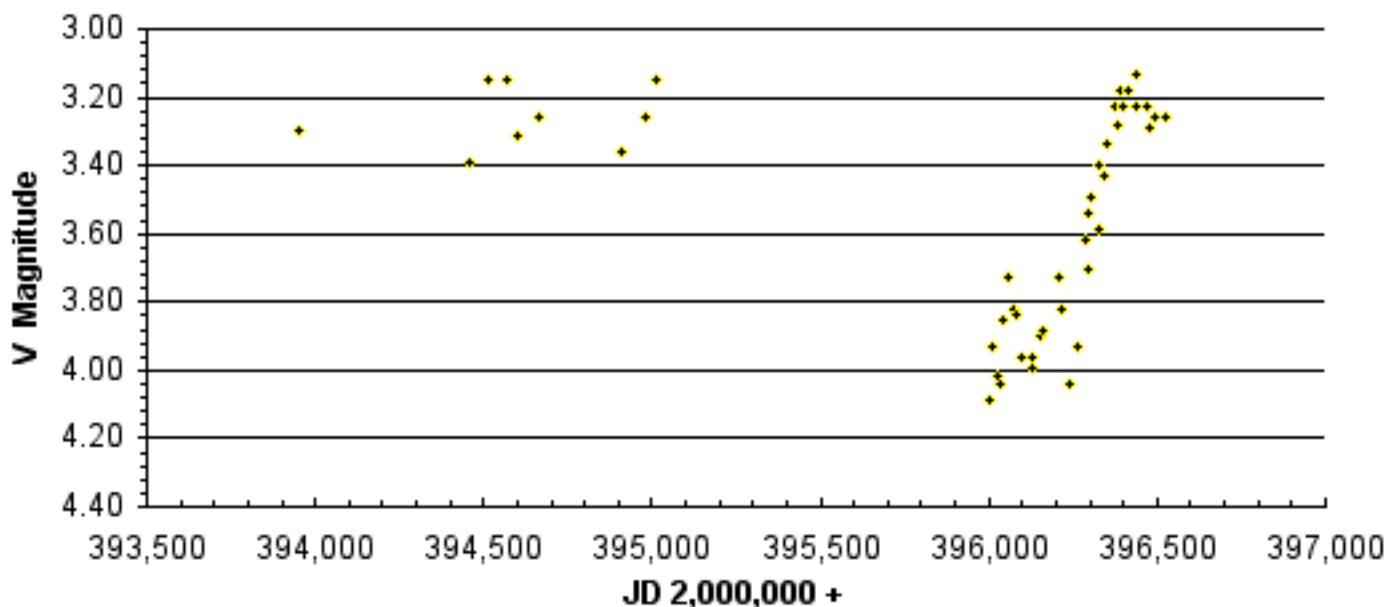
Sch = Schwab (not Schmidt!)

JD	mv	obs	JD	mv	obs
2393950.	3.30	Arg	2415259.	3.42	Pla
2394462.	3.39	Arg	2415263.	3.46	Lui
2394511.	3.15	Hei	2415287.	3.52	Pla
2394570.	3.15	Hei	2415302.	3.51	Lui
2394598.	3.31	Arg	2415347.	3.45	Pla
2394662.	3.26	Hei	2415372.	3.33	Pla
2394907.	3.36	Hei	2415373.	3.33	Sch
2394983.	3.26	Hei	2415393.	3.39	Pla
2395012.	3.15	Hei	2415399.	3.36	Sch
2396005.	4.09	Hei	2415400.	3.39	Lui
2396013.	3.93	Arg	2415423.	3.42	Lui
2396024.	4.02	Hei	2415431.	3.36	Sch
2396034.	4.04	Hei	2415457.	3.37	Sch
2396038.	3.85	Arg	2415457.	3.48	Pla
2396056.	3.73	Hei	2415487.	3.47	Pla
2396076.	3.82	Hei	2415496.	3.36	Sch
2396079.	3.84	Arg	2415514.	3.39	Sch
2396100.	3.96	Hei	2415525.	3.46	Sch
2396125.	3.96	Hei	2415578.	3.69	Sch
2396126.	3.99	Arg	2415588.	3.94	Sch
2396151.	3.90	Arg	2415608.	3.72	Sch
2396158.	3.88	Hei	2415617.	3.87	Sch
2396210.	3.73	Hei	2415629.	4.00	Sch
2396217.	3.82	Arg	2415643.	4.10	Lui
2396242.	4.04	Hei	2415648.	4.07	Sch
2396267.	3.93	Hei	2415651.	3.84	Pla
2396285.	3.62	Arg	2415651.	4.09	Sch
2396294.	3.70	Hei	2415659.	4.13	Sch
2396298.	3.54	Arg	2415672.	3.91	Pla
2396305.	3.49	Arg	2415675.	3.98	Sch
2396325.	3.40	Arg	2415678.	3.98	Lui
2396327.	3.59	Hei	2415695.	3.98	Sch
2396345.	3.43	Hei	2415699.	3.95	Pla
2396348.	3.34	Arg	2415704.	4.04	Lui
2396375.	3.23	Arg	2415711.	3.96	Pla
2396381.	3.28	Hei	2415725.	4.15	Pla
2396394.	3.18	Hei	2415733.	3.99	Sch
2396400.	3.23	Arg	2415733.	4.09	Lui
2396414.	3.18	Hei	2415735.	4.18	Pla
2396437.	3.13	Hei	2415760.	4.12	Sch
2396441.	3.23	Arg	2415762.	4.06	Lui
2396469.	3.23	Hei	2415776.	4.25	Pla
2396480.	3.29	Arg	2415797.	4.08	Sch
2396495.	3.26	Hei	2415801.	3.99	Lui
2396523.	3.26	Hei	2415806.	4.35	Pla

JD	mv	obs	JD	mv	obs
2415816.	4.03	Lui	2416081.	3.80	Pla
2415816.	4.21	Pla	2416089.	3.84	Pla
2415821.	4.07	Sch	2416106.	3.67	Lui
2415831.	3.83	Lui	2416107.	3.62	Sch
2415859.	4.09	Sch	2416121.	3.62	Lui
2415862.	4.07	Pla	2416128.	3.78	Pla
2415883.	3.83	Lui	2416134.	3.61	Lui
2415884.	4.18	Sch	2416137.	3.53	Sch
2415958.	4.11	Sch	2416138.	3.65	Pla
2415980.	4.08	Sch	2416142.	3.49	Lui
2415982.	3.95	Lui	2416151.	3.43	Lui
2415999.	4.01	Sch	2416160.	3.48	Sch
2416008.	3.87	Lui	2416161.	3.41	Lui
2416016.	3.73	Lui	2416172.	3.42	Lui
2416017.	4.00	Sch	2416172.	3.78	Pla
2416021.	3.81	Pla	2416175.	3.39	Sch
2416028.	3.80	Lui	2416188.	3.27	Lui
2416030.	3.90	Pla	2416195.	3.62	Pla
2416046.	3.99	Sch	2416196.	3.35	Sch
2416047.	3.91	Lui	2416198.	3.37	Lui
2416056.	3.91	Sch	2416204.	3.68	Pla
2416059.	3.91	Pla	2416215.	3.27	Sch
2416066.	3.83	Lui	2416217.	3.16	Lui
2416073.	3.87	Sch	2416223.	3.50	Pla
2416074.	3.79	Pla	2416236.	3.34	Sch
2416081.	3.79	Lui	2416245.	3.31	Sch

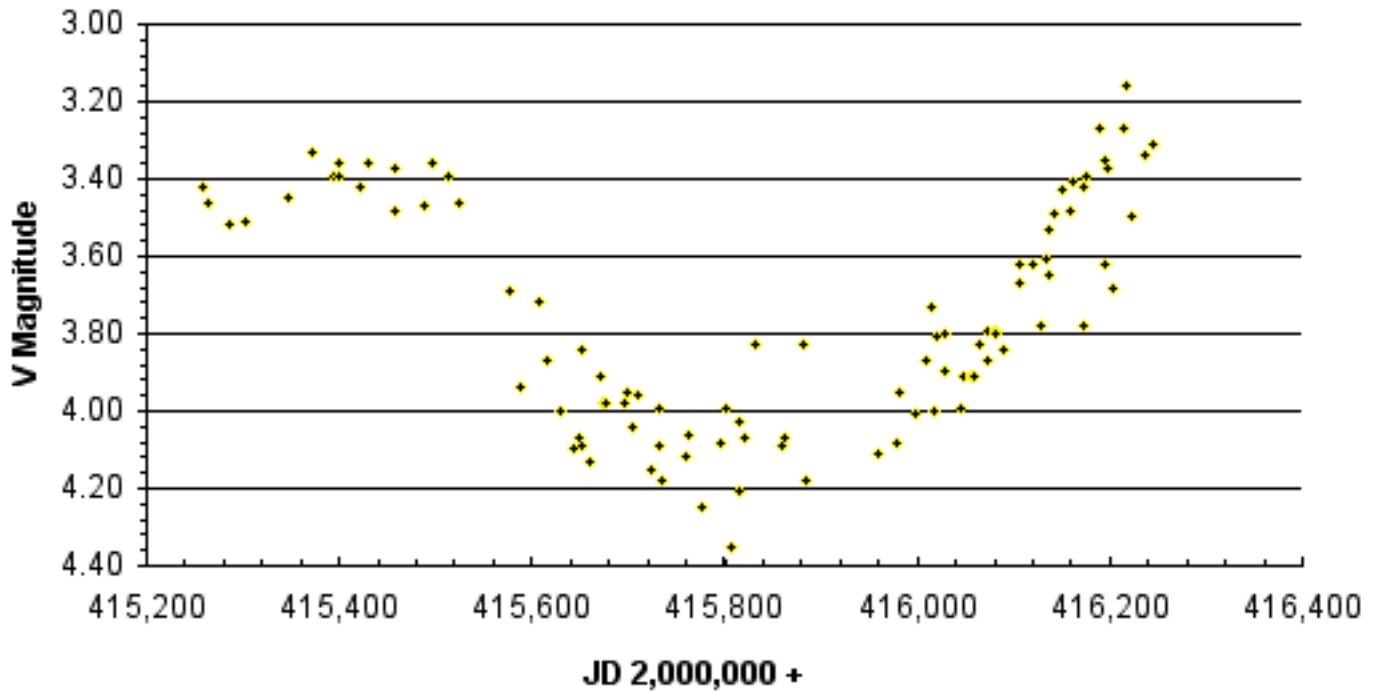
1846 - 1848 Argelander, Heis, Luizet, Plassmann & Schwab Eclipse Plot (HPO)

Epsilon Aurigae 1846-48 Eclipse



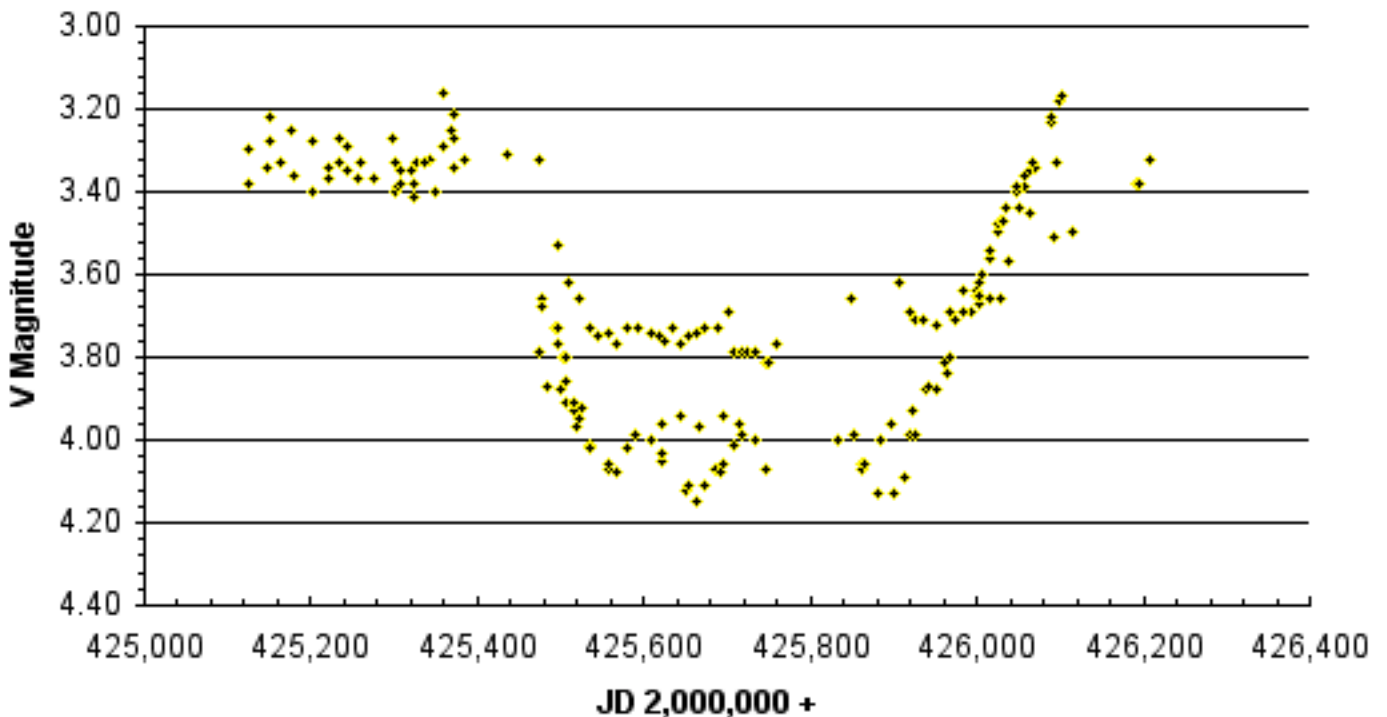
1900 - 1902 Eclipse Plot (HPO)

Epsilon Aurigae 1900-02 Eclipse



1928 - 1930 Eclipse Plot (HPO)

Epsilon Aurigae 1928-30 Eclipse



Source: 1936VeBB...11c...1G

GUSSOW M.

Veroff. Univ. Berlin-Babelsberg, 11, no 3, 1-36 (1936)

Epsilon Aurigae.

Observers: Pla = Plassmann

Bey = Beyer

Gus = Gussow

Gussow photoelectric data apparently reduced to the same zero-point as the Huffer & Stebbins data

JD	mv	obs	JD	mv	obs
2425124.34	3.30	Pla	2425588.39	3.99	Bey
2425125.82	3.38	Bey	2425592.69	3.73	Pla
2425148.14	3.34	Pla	2425609.22	4.00	Bey
2425149.51	3.28	Bey	2425610.75	3.74	Pla
2425163.05	3.33	Pla	2425618.89	3.75	Pla
2425175.51	3.25	Bey	2425623.77	3.96	Bey
2425179.84	3.36	Pla	2425625.87	3.76	Pla
2425202.81	3.28	Bey	2425634.08	3.73	Pla
2425203.64	3.40	Pla	2425644.98	3.94	Bey
2425222.42	3.34	Pla	2425645.23	3.77	Pla
2425234.35	3.33	Pla	2425653.96	3.75	Pla
2425244.88	3.29	Bey	2425663.26	3.74	Pla
2425245.30	3.35	Pla	2425666.37	3.97	Bey
2425256.20	3.37	Pla	2425672.95	3.73	Pla
2425261.45	3.33	Bey	2425689.31	3.73	Pla
2425274.05	3.37	Pla	2425694.73	3.94	Bey
2425301.43	3.40	Bey	2425700.08	3.69	Pla
2425304.30	3.39	Pla	2425708.86	3.79	Pla
2425307.33	3.38	Bey	2425715.12	3.96	Bey
2425323.90	3.41	Bey	2425718.55	3.79	Pla
2425325.95	3.38	Pla	2425725.28	3.79	Pla
2425344.85	3.32	Pla	2425733.37	3.79	Pla
2425349.46	3.40	Bey	2425734.38	4.00	Bey
2425360.63	3.29	Pla	2425745.37	3.81	Pla
2425373.51	3.34	Pla	2425746.90	4.07	Bey
2425386.50	3.32	Bey	2425751.88	3.81	Pla
2425437.44	3.31	Pla	2425760.72	3.77	Pla
2425473.98	3.79	Bey	2425832.98	4.00	Bey
2425475.91	3.32	Pla	2425849.83	3.66	Pla
2425485.46	3.87	Bey	2425853.50	3.99	Bey
2425498.35	3.53	Pla	2425884.01	4.00	Bey
2425500.97	3.88	Bey	2425896.72	3.96	Bey
2425507.98	3.91	Bey	2425908.46	3.62	Pla
2425509.50	3.62	Pla	2425920.62	3.69	Pla
2425522.56	3.66	Pla	2425923.68	3.93	Bey
2425525.39	3.92	Bey	2425926.17	3.71	Pla
2425534.01	3.73	Pla	2425937.94	3.71	Pla
2425534.49	4.01	Bey	2425938.35	3.88	Bey
2425544.00	3.75	Pla	2425953.95	3.72	Pla
2425557.48	4.07	Bey	2425961.58	3.81	Bey
2425558.08	3.74	Pla	2425966.05	3.69	Pla
2425568.40	3.77	Pla	2425975.74	3.71	Pla
2425581.62	3.73	Pla	2425983.05	3.64	Bey

JD	mv	obs	JD	mv	obs
2425985.42	3.69	Pla	2425523.48	3.95	Gus
2425994.90	3.69	Pla	2425535.55	4.02	Gus
2426002.02	3.67	Pla	2425556.45	4.06	Gus
2426005.86	3.60	Bey	2425567.55	4.08	Gus
2426015.81	3.56	Bey	2425580.41	4.02	Gus
2426017.91	3.66	Pla	2425620.29	4.05	Gus
2426025.31	3.50	Bey	2425621.50	4.03	Gus
2426029.17	3.66	Pla	2425650.31	4.12	Gus
2426036.28	3.44	Bey	2425652.31	4.11	Gus
2426038.28	3.57	Pla	2425663.29	4.15	Gus
2426052.37	3.44	Bey	2425672.33	4.11	Gus
2426056.32	3.39	Pla	2425687.35	4.07	Gus
2426064.34	3.45	Bey	2425693.32	4.08	Gus
2426064.78	3.35	Pla	2425695.36	4.06	Gus
2426071.34	3.34	Pla	2425707.35	4.01	Gus
2426093.45	3.51	Bey	2425718.36	3.99	Gus
2426096.95	3.33	Pla	2425861.53	4.06	Gus
2426115.92	3.50	Bey	2425862.51	4.07	Gus
2426193.47	3.38	Pla	2425866.53	4.06	Gus
2426196.49	3.38	Bey	2425880.57	4.13	Gus
2426208.90	3.32	Pla	2425900.58	4.13	Gus
2425151.63	3.22	Gus	2425912.51	4.09	Gus
2425221.52	3.37	Gus	2425921.46	3.99	Gus
2425234.44	3.27	Gus	2425925.50	3.99	Gus
2425298.42	3.27	Gus	2425938.38	3.88	Gus
2425301.30	3.33	Gus	2425943.50	3.87	Gus
2425306.29	3.35	Gus	2425953.40	3.88	Gus
2425309.32	3.35	Gus	2425963.46	3.84	Gus
2425319.38	3.35	Gus	2425967.39	3.80	Gus
2425321.30	3.35	Gus	2425985.23	3.69	Gus
2425326.33	3.33	Gus	2426000.26	3.64	Gus
2425335.31	3.33	Gus	2426001.40	3.65	Gus
2425360.34	3.16	Gus	2426002.35	3.65	Gus
2425370.38	3.25	Gus	2426003.42	3.62	Gus
2425371.38	3.27	Gus	2426016.39	3.54	Gus
2425372.38	3.21	Gus	2426024.32	3.50	Gus
2425477.58	3.66	Gus	2426026.35	3.48	Gus
2425478.53	3.68	Gus	2426027.35	3.47	Gus
2425494.57	3.73	Gus	2426032.34	3.47	Gus
2425495.59	3.77	Gus	2426047.41	3.40	Gus
2425498.54	3.73	Gus	2426048.35	3.39	Gus
2425502.59	3.80	Gus	2426058.34	3.36	Gus
2425505.56	3.80	Gus	2426067.33	3.33	Gus
2425507.55	3.86	Gus	2426089.35	3.23	Gus
2425516.56	3.93	Gus	2426090.36	3.22	Gus
2425517.49	3.91	Gus	2426098.38	3.18	Gus
2425520.47	3.97	Gus	2426101.41	3.17	Gus

**Plassmann, Beyer and Gussow Data
1928 - 1930 Eclipse Plot (HPO)**

Epsilon Aurigae 1928-30 Eclipse

